

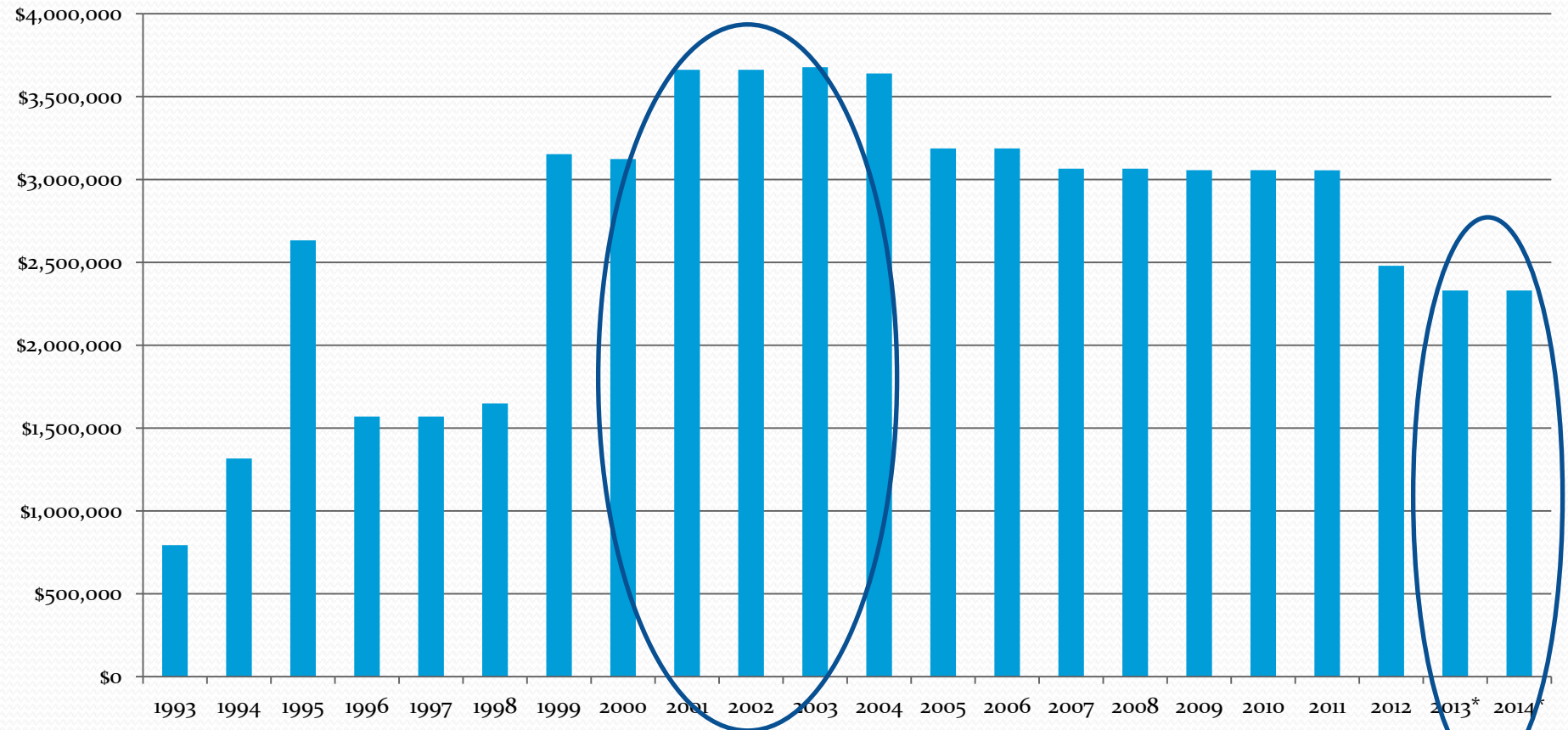
# The Future of Watershed Management (in Oklahoma)

Shanon Phillips  
OCLWA 2015



# A Changing World

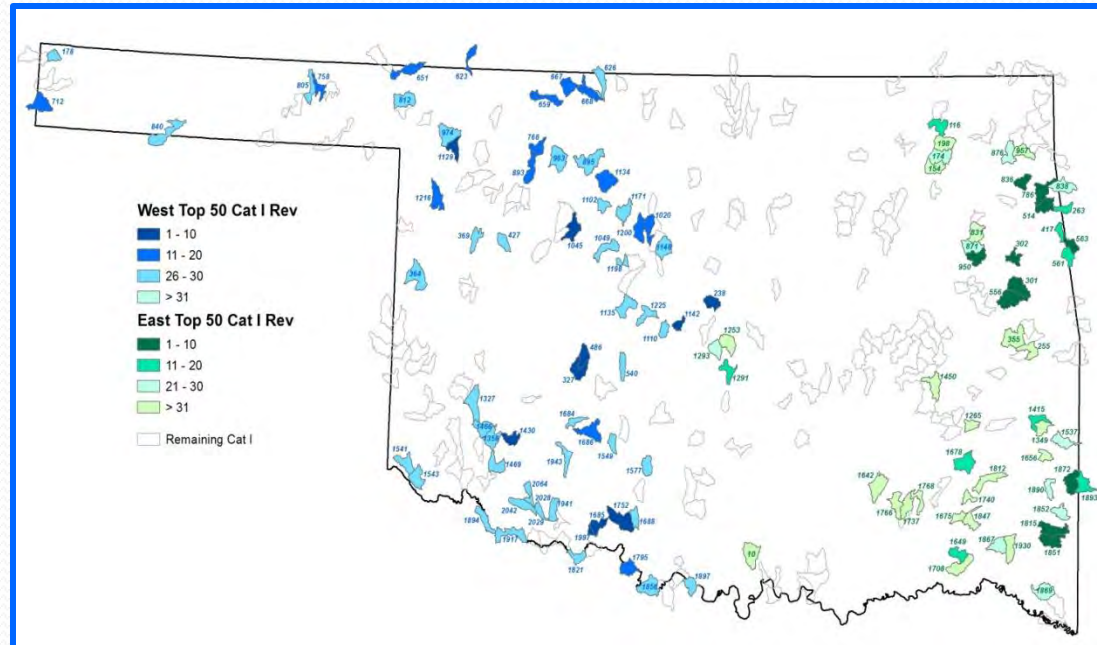
## Oklahoma 319 Funding



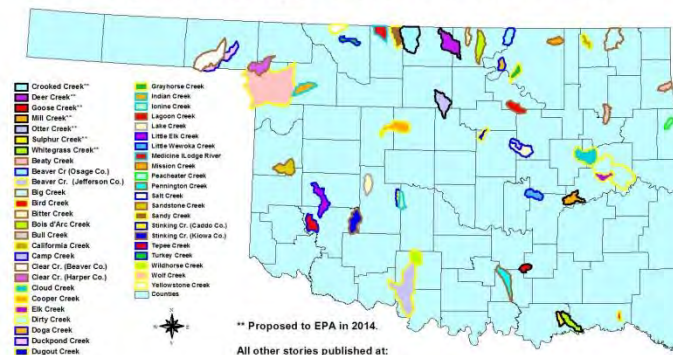
- Decline of \$1.2 million since 2003. 31% reduction since 2011
- Division dropped from 38 to 26 employees between 2010 and 2014
- Very limited “extra” funds to leverage new federal or non-state dollars

# New programs will:

- Use less EPA funds
- Focus in smaller watersheds
- Involve broader partnerships
- Be held to higher standards of success



## Oklahoma Nonpoint Source Success Stories



\*\* Proposed to EPA in 2014.

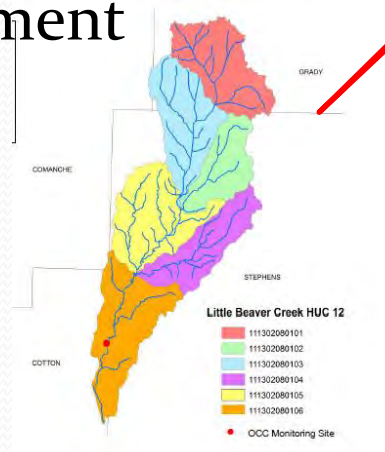
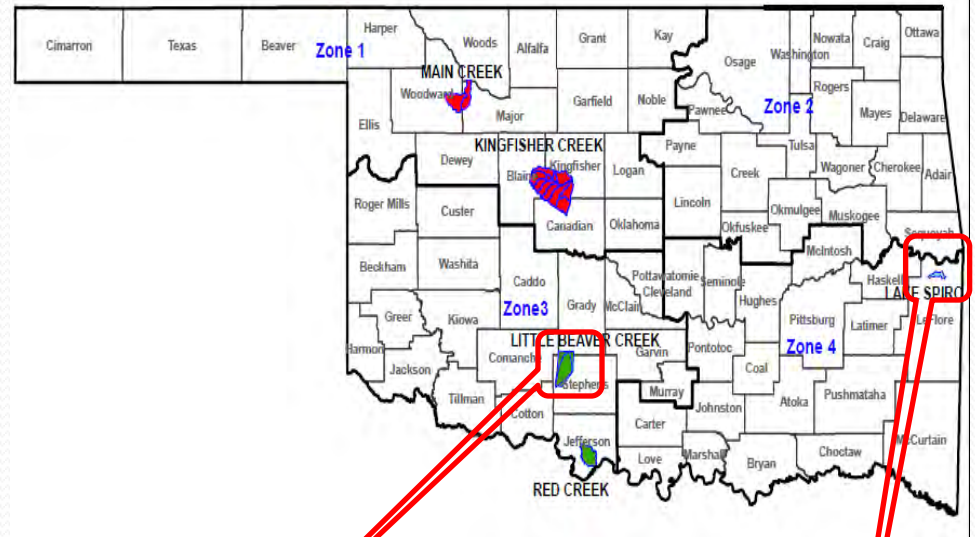
All other stories published at:

<http://water.epa.gov/polwaste/nps/success319/>



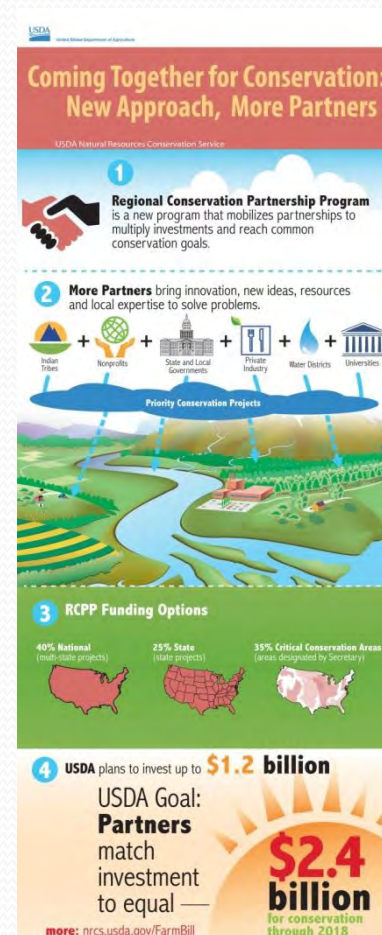
# National Water Quality Initiative

- 2015 - 2020 - 5 watersheds
  - Estimated \$750,000 annually
- Planning emphasis on removal of livestock from streams, grazing systems, soil health, buffers and animal waste management



# Regional Conservation Partnership Program (RCPP)

- Program geared to bring new partners and dollars to conservation programs
- Works within the framework of EQIP, CSP, ACEP, and HFRP
- Targets soil, water, wildlife and related natural resources on regional or watershed scales.
- Funded 115 projects nationwide for \$350 million fed., leveraging an additional \$400 million from partners

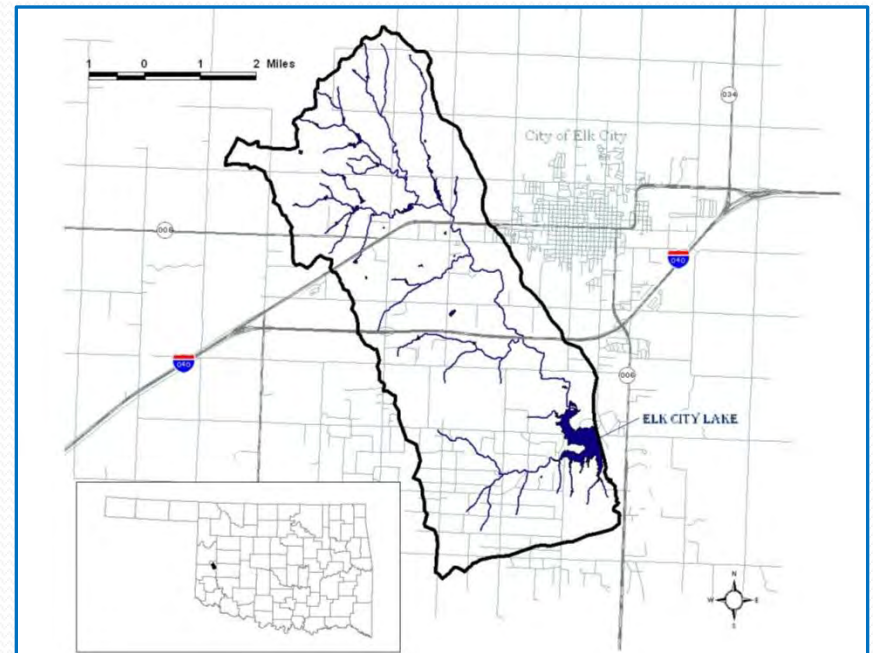


# 2015 Funded Proposals Submitted by OCC

- Elk City Watershed RCPP- State funding
  - Approx. \$2.9 million total funding (\$1.5m partner, \$1.4m NRCS)
- Middle and Lower Neosho Basin RCPP- National funding
  - Approx. \$8 million total funding (\$4,130,120 from KS and OK, \$4 m from NRCS)

# Elk City Lake RCPP

- 15500 Acre Watershed in Beckham County/North Fork of Red River CD
- Elk City originally asked OCC for assistance in 2006 to address bacteria problems in the lake
- OCC developed a Watershed Plan in 2009
- In the meantime, the lake has had fish kills, bluegreen algae blooms, and turbidity concerns





# Elk City Lake RCPP Partners and Roles

Partner	Roles	Funding
NRCS	Technical and Financial Assistance to producers (and partners)	\$1,400,000
OCC	Technical and Financial Assistance to producers, Education and Outreach, Water Quality Monitoring, Soil Health Evaluation, Project Reporting,	\$1,550,000
North Fork of Red River CD	Outreach, local leadership	
City of Elk City	Outreach, local leadership	





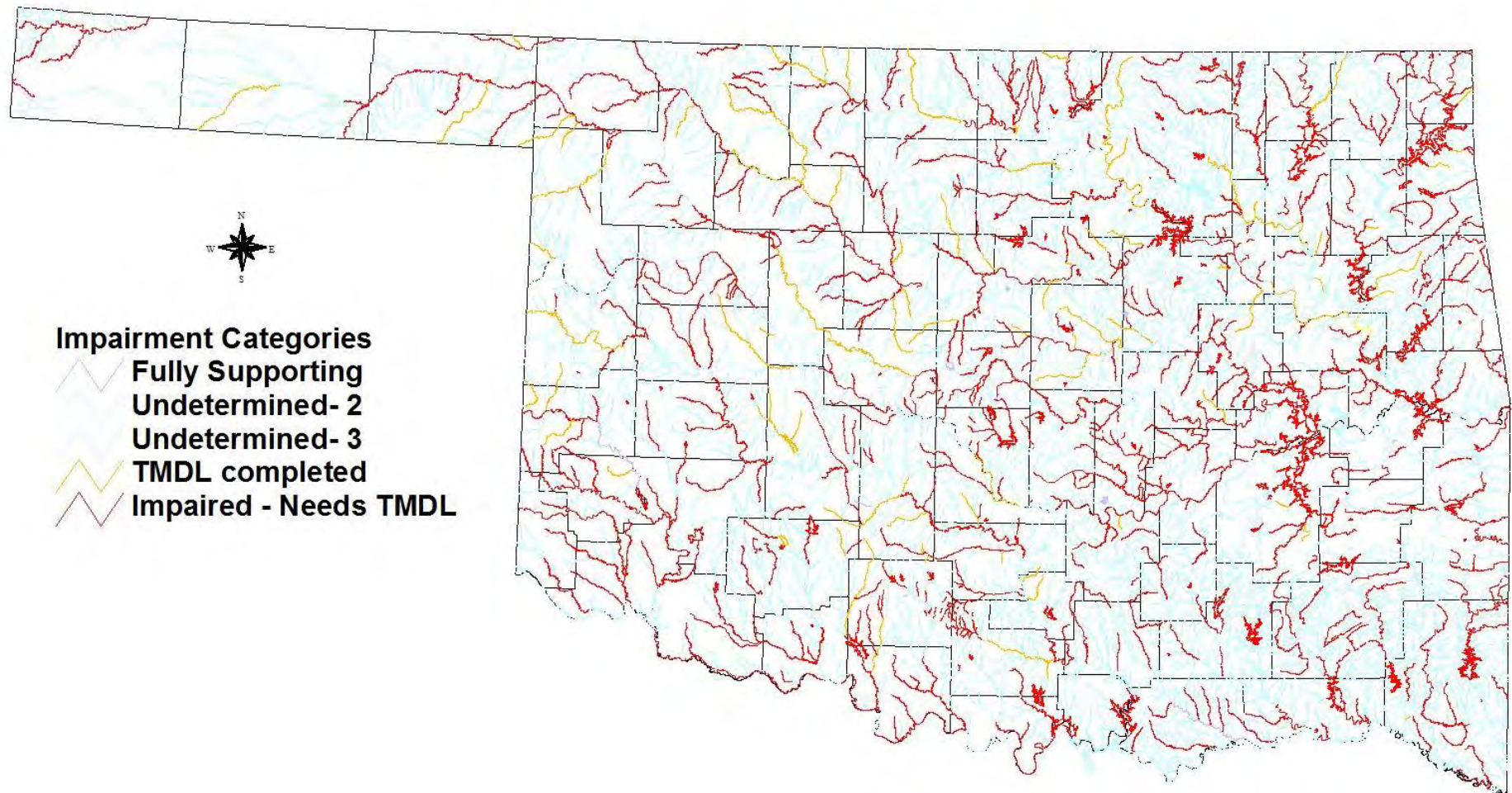
# Elk City Lake RCPP Project Activities

- Form local Watershed Advisory Group
- Select Conservation Practices and Prioritization
- Work with local producers to develop conservation plans and implement conservation practices
- Conduct outreach and education events with watershed and nearby citizens
- Monitor water quality in West Elk Creek
- Verify carbon sequestration in select properties enrolled in the project



# The Primary Challenge: Remove Waterbodies from Impaired List

## Draft 2014 Impaired Waterbodies





# OCC Staff Support

- Monty Ramming- Local Project Coordinator
- Shanon Phillips- Project Administrator
- Jason Ramming- Water Quality Monitoring



# Budget Breakdown

- Additional \$\$ **for** conservation district over 5 years
  - \$24,000
- Additional \$\$ for conservation practices over five years
  - NRCS- \$1,148,000
  - OCC-\$1,000,000

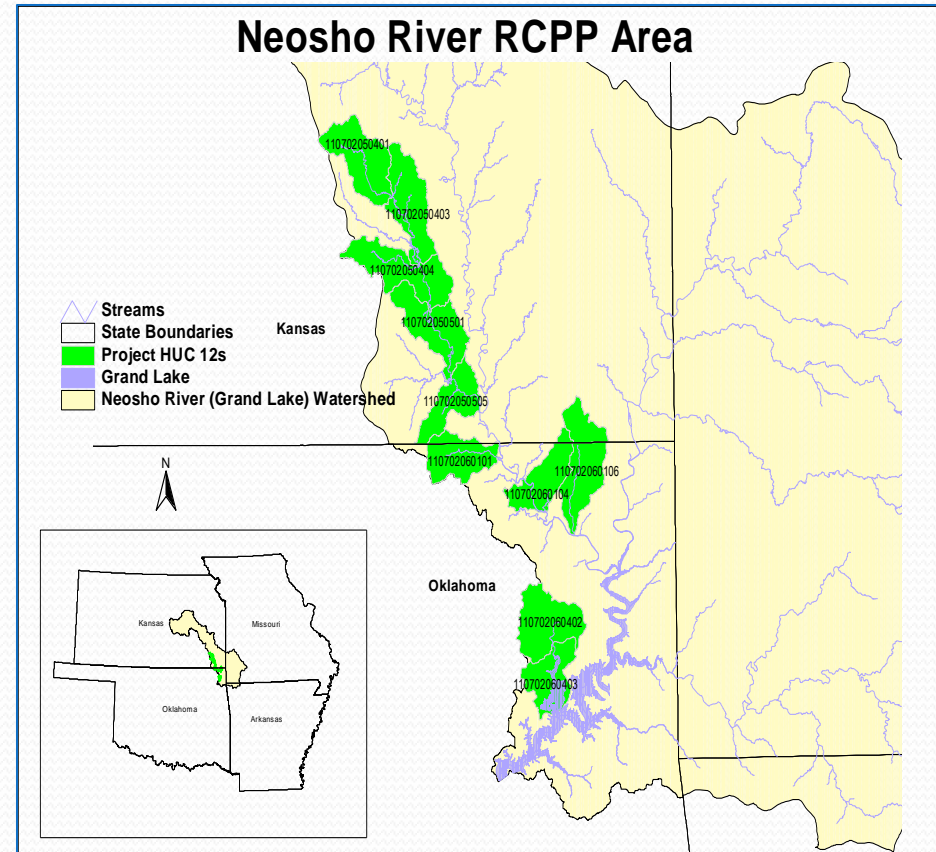




# Middle and Lower Neosho River

## Basin RCPP

- 10 HUC 12 watersheds in OK and KS
- Neosho River and Grand Lake have water quality problems associated with excess nutrients and fecal bacteria
- Kansas, Missouri, and OK have all been working on the problem, but independently
- In 2008, OK completed targeting in the watershed to determine areas closest to the lake that might be contributing most sig. to the problem.



# Neosho Basin RCPP Partners and Roles

Partner	Roles
NRCS	Technical and Financial Assistance to producers (and partners)
OCC	Technical and Financial Assistance to producers, Education and Outreach, Water Quality Monitoring, Soil Health Evaluation, Project Reporting,
KS Dept. of Ag Division of Conservation	Technical and Financial Assistance to producers, Education and Outreach
KS Dept. of Health and Environment	Technical and Financial Assistance to producers, Education and Outreach, Water Quality Monitoring
KS State Forestry Service	Technical and Financial Assistance to producers, Education and Outreach
Local Conservation Districts	Outreach, local leadership
Grand River Dam Authority	Outreach, local leadership, water monitoring

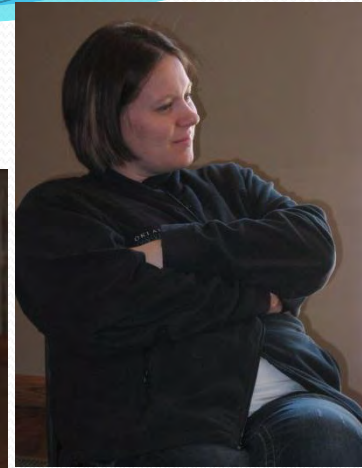
# Neosho Basin RCPP Project Activities

- Form local Watershed Advisory Group
- Select Conservation Practices and Prioritization
- Work with local producers to develop conservation plans and implement conservation practices
- Conduct outreach and education events with watershed and nearby citizens
- Monitor water quality
- Verify carbon sequestration and monitor soil health in select properties enrolled in the project



# OCC Staff Support

- Jill Ashbrenner and Tashina Kirk Local Project Coordinators
- Shanon Phillips- Project Administrator
- Ashley Rhea- Water Quality Monitoring





# Budget Breakdown

- Additional \$\$ for conservations district in OK over 5 years
  - \$45,600
- Additional \$\$ for conservation practices over five years in two states
  - NRCS- \$3,400,000
  - OCC & KS partners- \$2,899,275



# Questions?

- Shanon Phillips
  - 405-522-4500 or
  - [shanon.phillips@conservation.ok.gov](mailto:shanon.phillips@conservation.ok.gov)

